

Company Guide

2024/2025

*Making Your Ideals Reality,
Turning Our Experience into Strength.*



Corporate Philosophy

Rikei Corporation will contribute to society through the enhancement of the quality, speed, and volume of business activities as well as through the pursuit of technological innovation.

Basic Policies of Corporate Management

Rikei Corporation strives to contribute to the development of a highly information-oriented society by supplying solutions meeting the needs of our customers with ideas and advanced technologies well ahead of expected social changes.

Message from the CEO

The mission of the Rikei Group is to find the most cutting-edge products and systems from around the world and provide them as the optimal solutions to customers' problems through our three core businesses, “System Solutions,” “Network Solutions,” and “Electronic Components & Instruments,” which we have established based on strong relationships with many companies and consistent efforts since our founding.

In the current era, the structure of industry is undergoing major change due to the significant progress of digital technology. This includes gains in efficiency enabled by the digital transformation of business with the use of AI. We aim to be a partner that makes dreams come true, meeting the needs of customers by leveraging optimal solutions, strengthening and stabilizing our three core businesses and aggressively taking on challenges in new business domains.

Furthermore, in accordance with the Group's sustainability policy, we will support society through our products, with the goal of contributing to the achievement of the SDGs.

We respectfully ask for your continued support.



Satoshi Asaka
President & CEO

Company Profile (as of March 31, 2024)

Established	June 8, 1957
Capital	JPY3,426million
End of Fiscal Year	March
Sales	Non-Consolidated JPY7,021million
	Consolidated JPY12,131million
Employees	Non-Consolidated 131
	Consolidated 165
Main Financing Banks	MUFG Bank (Shinjuku-Shintoshin Branch) Mizuho Bank (Shinjuku-Nishiguchi Branch) Sumitomo Mitsui Banking (Shinjuku-Nishiguchi Branch) Resona Bank (Shintoshin Banking Department) Mitsubishi UFJ Trust and Banking (Head Office)

Executive Officers (as of June 27, 2024)	President & CEO Satoru Isaka
	Managing Director Naoki Furuhata
	Managing Director Makoto Koyanagi
	Director Koji Furuta
	Director Shoji Hasegawa
	Director Hiroaki Koganemaru
	Director Shinji Yokoyama
	Outside Director Yusuke Date
	Outside Director Akihisa Takizawa
	Outside Director Junko Koshino
	Fulltime Statutory Auditor Shin-ichiro Ishibashi
	Outside Statutory Auditor Soichiro Akimoto
	Outside Statutory Auditor Shintaro Furuya

Headquarters

Shinjuku Mitsui Building No. 2, 3-2-11
Nishi-Shinjuku, Shinjuku-ku, Tokyo 160-0023
TEL.+81-3-3345-2150 FAX.+81-3-3345-2168

Osaka Branch

JIN-ORIX Building, 1-7-20
Nishi-Tenma, Kita-ku, Osaka 530-0047
TEL.+81-6-6130-8777 FAX.+81-6-6130-8820

Nihonbashi Sales Office

Koamicho General BLDG. 18-3,
Nihonbashi Koamicho, Chuo-ku, Tokyo 103-0016
TEL.Same as the Headquarters.

Chitose - Eniwa Sales Office

MY Eniwa Building, 56-1
Kyomachi, Eniwa-shi, Hokkaido 061-1444
TEL.+81-123-25-5690 FAX.+81-123-25-5691

Tohoku Sales Office

Sento-Kaikan Building, 2-2-10 Chuo, Aoba-ku,
Sendai, Miyagi 980-0021
TEL.+81-22-208-9559

Nagoya Sales Office

No.11 KT Building, 3-17-4
Marunouchi, Naka-ku, Nagoya, Aichi 460-0002
TEL.+81-52-962-3710

Kyushu Sales Office

DaiHakata Building, 2-20-1
Hakataekimae, Hakata-ku, Fukuoka 812-0011
TEL.+81-92-411-8731 FAX.+81-92-411-8744

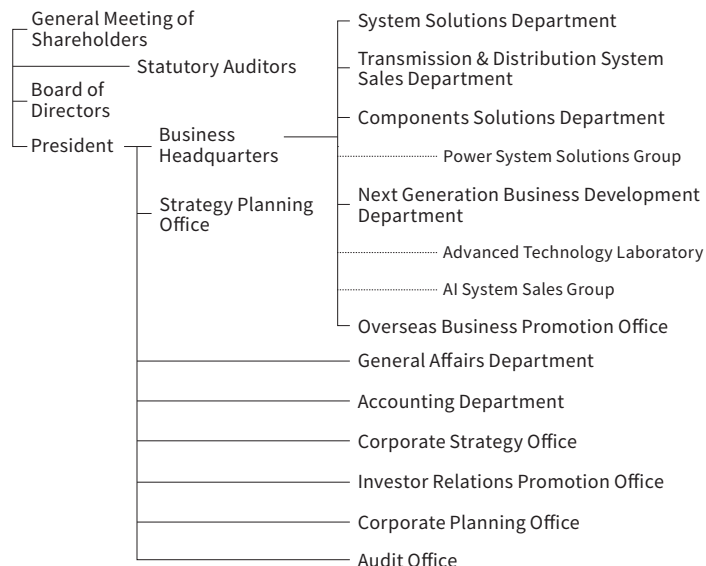
Technical & Engineering Center

Makuhari Techno Garden, B Tower, 1-3
Nakase, Mihama-ku, Chiba 261-8501
TEL.+81-43-274-8431 FAX.+81-43-274-8439

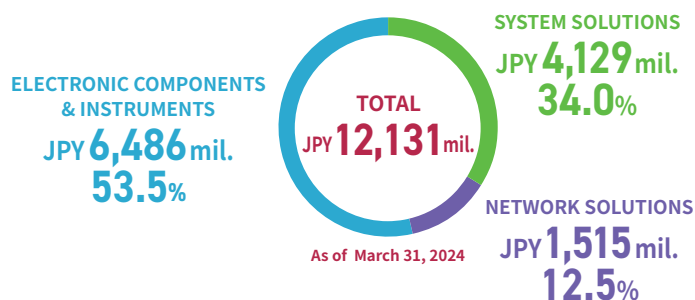
Okinawa Office

Tomari Port Building, 3-25-2
Maejima, Naha, Okinawa, 900-0016
TEL.+81-98-943-2378

Organization Structure (as of April 1, 2024)



Consolidated Sales and Composition Ratio by Department



Subsidiaries

AeroPartners Incorporated

Established	July 1992
Capital	JPY80million
Executive Officers	President Makoto Koyanagi Director Tamami Nakahara Director Shinji Yokoyama Statutory Auditor Shoji Hasegawa
Address	Shinjuku Mitsui Building No. 2, 3-2-11 Nishi-Shinjuku, Shinjuku-ku, Tokyo 160-0023 TEL +81-3-3340-6101 FAX +81-3-3340-6105 URL http://www.aeropartners.co.jp/en/index.html
Field of Business	Sale and leasing of aircraft and aircraft parts and customer support

NetWell System Corporation

Established	September 2008
Capital	JPY15million
Executive Officers	President & CEO Akimi Tomita Director Koji Furuta Director Yukihito Yamagishi
Address	Shinjuku Mitsui Building No. 2, 3-2-11 Nishi-Shinjuku, Shinjuku-ku, Tokyo 160-0023 TEL +81-3-3345-2180 FAX +81-3-3345-2172
Field of Business	System development

SYSTEM SOLUTIONS

Providing solutions including information security, IT infrastructure and CAD solutions and solutions in new fields of business, such as AI, IoT, VR/AR, etc. to private companies, universities, government offices and research institutions as comprehensive systems that meet the needs of customers.

Flexible and agile IT infrastructure



Hewlett Packard Enterprise (HPE) Solutions

An extensive lineup of HPE products is available to support any type of workload. We also offer a wide scope of solutions, including hyper-converged virtual infrastructure, high performance Aruba networks suitable for the implementation of security measures and IoT systems.



HP's personal computing and printing solutions that create new value



HP Japan Products

The provision of PCs for corporations installed with comprehensive and unique security solutions developed through advanced research and development efforts, and printing solutions leveraging advanced industry-leading technologies.



Centralized implementation and management of the operations of educational institutions



"CampusMagic" Entrance Exam and Curriculum System

"CampusMagic" is an intuitive and easy-to-operate system that helps educational institutions manage entrance examinations, employment, attendance and other operations. Using this system, data such as student attendance, courses, and test scores can be centrally managed at low cost. The standard system comes equipped with a score analysis tool and web portal feature and it fulfills a wide range of needs of educational institutions.

Secure file sharing



"Kiteworks" Secure File Collaboration System

It provides on-premises solutions that enables large files and folders to be securely shared with external users.

Digital twin technology supporting design, verification and AI development



Development Using Digital Twins in Manufacturing Industries

It supports a wide range of development efforts including AI training for automotive applications and the verification of designs and factory facilities in high-precision digital twin environments using Omniverse and Unreal Engine.



PHR* healthcare products using transcutaneous optical technology



Non-contact Vital-Sign Measurement Solution

Providing non-contact vital measurement solutions to measure vital signs such as heart rate and analyze these vital signs using AI, as well as remote diagnosis models and smart mirror devices using these technologies.

*PHR: Personal health records. Information about a person's health, medical care and nursing care.

Facial recognition technology to minimize on-site work and prevent medication errors when providing nursing care



"Medi-Assi" Application for Preventing Medication Errors

"Medi-Assi" is a cloud SaaS solution to prevent medication errors and support the administration of medication in care facilities. On-site work and time is minimized using facial recognition technology to prevent careless medication errors.



Comprehensive provision of IBM solutions



IBM Solutions

Products supporting IT infrastructure are provided primarily through software. LTO tape systems for the video libraries used by broadcast stations are also provided.

Made in Japan IDaaS



"Extic" Cloud Authentication Solution

"Extic" is a made in Japan cloud ID management platform that enables ID federation both in the cloud and on premises, featuring single sign-on and federated authentication using GakuNin.*

*GakuNin: The Academic Access Management Federation in Japan. Its members include universities, educational institutions, publishers, etc. that use and provide academic resources electronically.



Globally standard simulation software for the analysis, design and verification of power systems and facilities

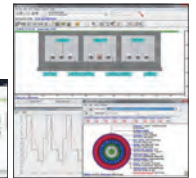


"PSCAD V5" Software for Power Systems EMT Simulations, "CYMCAP" Software for Calculating Cable Current Carrying Capacity

"PSCAD V5" analyzes various power system issues based on instantaneous values with an excellent GUI. It is capable of building power systems, performing analyses and outputting highly accurate results. "CYMCAP" supports the design of power facilities using a wide range of modules and reliably calculating current carrying capacity.



PSCAD V5



CYMCAP

Expandability and excellent operability



"Creo" 3D CAD, "PTC Windchill" product life cycle management, and "Vuforia Studio" AR platform

"Creo" is an integrated offering of 3D CAD, CAM, and CAE solutions that feature all the product development processes, ranging from design to the analysis of mechanisms, heat, conduction, and stress. We also provide "Windchill" solution, which offers capabilities for helping to manage enterprise data, bills of materials (BOMs), documents, workflows, changes and collaborations. Integrated with "Vuforia Studio" an augmented reality (AR) platform, "Creo" enables you within just a few clicks to create and publish a direct AR experience.



Two-factor authentication, visual inspection and facial recognition products using AI technology



AI Products

Providing a contracted development service using packaged and customized software using AI engines from Mindhive and ax, as well as facial authentication engines from GLORY. Rikei has also released products that make it easier to increase work efficiency by using its original AI technology, including intracompany information searching tools using ChatGPT's standard features.



Gesture authentication

Supporting corporate internet businesses



"MarkONE Series" of Integrated Internet Marketing Systems

The "MarkOne series" of systems enable the integrated system management that is necessary for marketing using a single management panel. The systems featuring many functions including "MarkONE Membership" for the construction of membership websites, web input-form creation, the totaling of data that has been entered into the system, mass email distribution and a specialized tool for campaign sites.



NETWORK SOLUTIONS

Providing cutting-edge solutions focused on the transmission and distribution of information for customers in the broadcasting, telecommunications and other industries and local governments.

Realizing digital transformation



HPE Aruba Networking Solutions

HPE's "Aruba" provides enterprise networks for the realization of digital transformation and secure, stable and easy to use Wi-Fi environments that are among the best in the industry utilizing added value features such as authentication and positional information features to provide flexible solutions tailored to the scale of the specific installation. "Aruba Remote Access Points (RAPs)" are also available for users working from home or remote offices.



Network devices with a core-to-edge product line featuring high durability and enterprise-friendly management



Alcatel-Lucent Network Solution

Integrated product lines on a single OS from edge to core, wired/wireless LANs, and security can be managed either on-premises or in the cloud, enabling flexible installation in any environment including in offices, outdoors, and in factories. Simplified networking enables the automation of federated authentication.



From wireless solutions to the enhancement of disaster prevention in line with the scale of the individual deployment



Long-Distance Wireless Access Devices

RADWIN's "2000 Alpha" "JET DUO" "5000L" and "FiberinMotion®" series of products for 4.9 GHz outdoor long-distance wireless LANs for 1:1 and 1:N can connect remote areas up to 40 km apart via wireless LANs. These series of products can also be used while moving and they are provided to broadcast and cable TV stations as content transmission systems. They are also provided to municipal governments for the establishment of disaster preparedness information systems, and uses as wireless equipment that is a part of transportation infrastructure.



Siklu's "EtherHaul™ 600TX" and "MultiHaul™ TG" series of products are license-free, high-speed wireless LANs with up to 3.8 Gbps throughput. They are capable of transmitting a large volume of data up to 1 km as a trunk line for Internet services. In addition, the "EtherHaul™ 8010 series" of millimeter-wave radios requiring a license provide up to 5 km/10 Gbps transmission.



Providing the best IoT wireless infrastructure for video, sensor information, etc.



IoT Wireless Infrastructure

Constructing a system for the remote monitoring of rivers and dams outside communication service areas using multiple wireless devices (two-way communication for still images and videos). Network construction using sXGP and local 5G/private LTE base stations (including EPC servers) is also possible.

Simulating various network constructions by reproducing Internet connection scenarios



Network Emulators, Traffic Generators

Providing network emulators that enable the simulation of network environments including terrestrial, wireless and satellite networks by reproducing bandwidth, latency, packet loss, etc. on IP networks in addition to traffic generators that generate network and application traffic supporting various protocols. Performance bottlenecks and failure points can be identified before the network goes into operation.



Network Infrastructure for Hotels



"Internet Access Gateway" Screencasting, and Wi-Fi Networking Products

Nomadix "Internet Access Gateway" realizes high-speed hotel Internet access, featuring billing, authentication, bandwidth control and URL redirection. "Nomadix Casting" is also provided for video mirroring from smartphones to hotel TVs, as well as short-delivery network switches and wireless Wi-Fi.



Rikei, a Company Supporting the

All busin



Supporting all-IP broadcasting and low-latency delivery mechanisms using the latest technology

Digital Video Transmission and Distribution Systems

To meet the high-end video and audio processing needs of media companies such as broadcast TV and radio stations, cable TV stations and paid streaming service providers, we provide total systems from codec equipment compatible with the latest standards to players for viewing content, including quality monitoring and optimization. In addition to conventional equipment installed in facilities, we also offer a wide range of services, including software configured on the cloud and pay-as-you-go service provision. We support a wide variety of styles video distribution end to end, from providing only products to supporting the construction of systems that transcend the boundaries between manufacturers.



Customizable RF and Microwave Components Satellites Components

Teledyne Technologies Incorporated has developed and manufactured RF and microwave components for 45+ years, offering cutting-edge technology to the defense, aerospace, and security markets. Supporting customers facing new technological challenges with the components for modules in the satellite market, which has high reliability and SWaP* requirements.



Photo provided by Synspec Inc.

*SWaP: Size, weight and power. One of the important factors in the design of next-generation satellites.

Providing total support for satellite communications Satellite Communications Products

Providing satellite communications products from western countries including satellite modems, frequency converters, power amplifiers and various antennas, as well as services for selecting equipment and designing and building systems according to the user's application. Additionally, building and providing devices to be installed in satellites, modules, and X/Y tracking antennas for communications in the field of low earth orbit satellites, an area that is drawing attention as a new space business.



Comtech ELEVATE

Cloud video streaming service for various needs across industries Cloud Video Streaming Service

A video streaming service based on the SaaS business model that can be started anytime, easily, and immediately. Providing services ranging from knowledge sharing for internal training and sales materials to paid video distribution services, regardless of industry, size or whether it is live or on-demand. Realizing one-stop solutions for video delivery issues not only by offering video distribution processing but also providing proposals regarding transmission, delivery networks and portal sites, including customizable players.

Helping local governments distribute disaster preparedness information

Disaster Preparedness Information Distribution Systems

The systems are designed to enable municipal governments to distribute disaster preparedness information using various methods, utilizing long-distance radio communication instead of wired infrastructure that may become disconnected due to an earthquake or tsunamis. Rikei is skilled in analyzing J-Alert telegrams, enabling the distribution of disaster information not only through municipal websites, but also linked SNS accounts on platforms such as X (formerly Twitter) and Facebook.



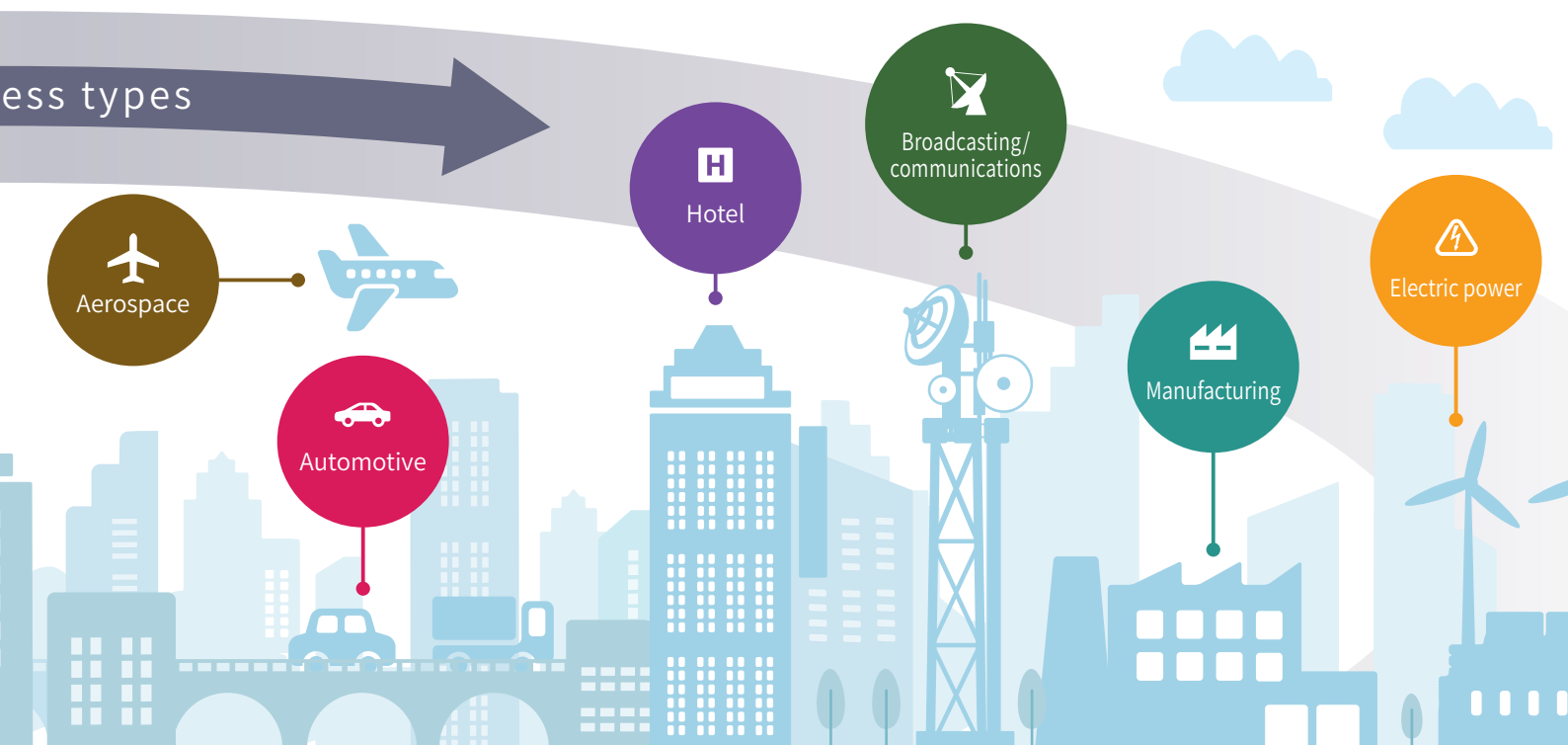
Reliable technical support Support for Sales Engineering, System Design, Installation and Operation

Our field support engineers provide services for system design and proposal, shipping inspections of systems and software, building systems, the procurement installation, sales and maintenance of J-Alert systems and the maintenance of Nomadix "internet access gateways".



Technical & Engineering Center

Society and Creating the Future



ELECTRONIC COMPONENTS & INSTRUMENTS

Providing a wide range of electronic components, instruments and electronic materials in a wide range of fields, from industrial equipment to the automotive, medical, optical communication, optical feeding and national security fields. Our highly specialized products enable us to craft optimal proposals suited to the purpose of use.

Power Supplies Requiring High Reliability

Power Supplies

Offering PULS high-efficiency switched-mode DIN-rail power supplies and RECOM high-efficiency DC/DC and AC/DC converters and switching regulators.



High performance electronic components essential for the industrial equipment field

Electronic Components

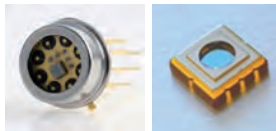
We provide LED chips for high-resolution sensor applications, highly reliable resistive and capacitive touch panels for industrial equipment, LDC panel modules, character OLED modules, motherboards, industrial PCs, chip resistors, chip capacitors and ceramic packages.



A full lineup of emitter and photodetector products, from UV to near-infrared

Emitters and Photodetectors

Providing many different emitters and photodetectors for different applications, we can design packages including the integration of emitters and photodetectors, as well as propose optical power supply systems suited to the user's purposes.



Proposing one-stop services from design to the development of custom fibers and optical devices.

Optical Fibers and Optical Fiber related Products

We can create proposals for the development and manufacturing of custom fibers, including single-mode fibers and multi-mode fibers from Photonic Science Technology, and we also offer assembly services including fiber termination processing, arraying, bundling, and high-powered connectors.

We also develop prototypes and produce small lots of optical fibers, design and install drawing equipment, and do fiber simulation analysis in cooperation with universities. The full-scale mass production of coated fibers is done by the Bevenic Group in Finland, and optical design of systems including optical lenses and thin-film coatings are also available.



Industrial PCs for manufacturing and medical equipment and installation in vehicles

Electronic Devices

Providing PCs with enhanced robustness and heat dissipation measures as industrial equipment for factory automation, medical systems and transportation systems.



Industrial measuring instruments that enable quick and low-cost development

Measurement and Analysis Solutions

We provide NI's data recording-related products that make it possible to record data on the individual PC basis, and GPIB related products used as measuring equipment control interfaces. In addition, we also provide module-type RF measuring products which are useful for designing and testing wireless devices. The use of software products such as the industry standard "LabVIEW" also helps drastically reduce the amount of time needed for development.



IoT module which has been used in many types of heavy machinery to enable satellite communication

Quake Global's IoT/M2M Terrestrial and Satellite-compatible Module

With 3G/LTE communications certified as compliant with domestic Japanese carrier technical standards and IoT communications modules that support satellite communications, we provide connectivity from locations outside terrestrial signal coverage. The IoT communications module is used by 13 of the world's top 20 heavy equipment manufacturers and it is able to collect data from anywhere in the world.



Trusted electronic materials with proven performance

Electronic Materials

Epoxy Technology has established an impressive track record spanning decades in the field of optical communications. It has developed hybrid adhesives (which are provisionally cured using ultraviolet light and permanently cured by heat) that are tailored to the customer's processes using the expertise accumulated to date. The company has an extensive record of delivering products not only for medical and sensing applications but also in a wide range of other fields. It also provides functional materials that meet the needs of customers including AOS Thermal Compounds' non-silicone thermal grease, which is free of outgassing issues.

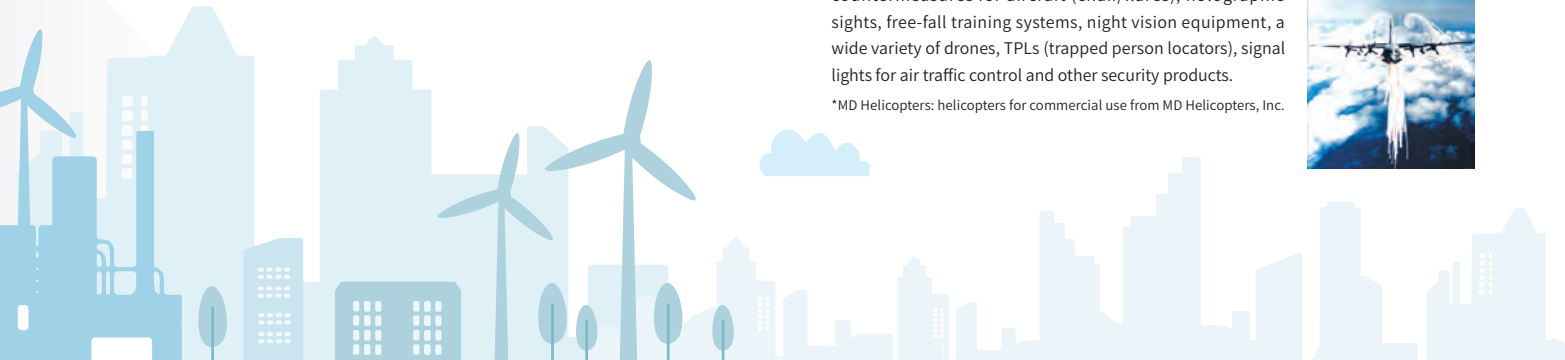
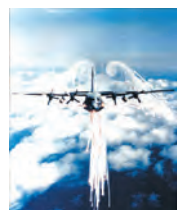


Playing an active role at the forefront of national security

Aircraft and Components/Lifesaving Equipment

MD Helicopters,* sales/repair of aircraft components, countermeasures for aircraft (chaff/flares), holographic sights, free-fall training systems, night vision equipment, a wide variety of drones, TPLs (trapped person locators), signal lights for air traffic control and other security products.

*MD Helicopters: helicopters for commercial use from MD Helicopters, Inc.



Company History

- 1957 Rikei Trading Co., Ltd. founded in Shiba-Shimbashi (present Nishi-Shimbashi), Minato-ku, Tokyo
- 1964 Delivered DEC's PDP5 minicomputer to the University of Tokyo
- 1968 Osaka Branch opened
- 1971 Company's name changed to Rikei Corporation
- 1973 Rikei Corporation of America established in Cupertino, California, USA as a locally incorporated company (Liquidated in April 2014)
- 1974 Rikei Corporation (H.K.) Ltd. established in Hong Kong as a locally incorporated company (Liquidated in March 2024)
Delivered Scientific Atlanta's satellite tracking system to Showa Station in Antarctica
- 1978 Head office moved to the Shinjuku Nomura Building in Nishi-Shinjuku, Shinjuku-ku, Tokyo
- 1979 Delivered the first DEC VAX780 to the National Institute for Basic Biology
- 1982 Nagoya Sales Office opened
- 1986 Sendai Sales Office opened (presently Tohoku Sales Office)
- 1988 Listed on the Second Section of Tokyo Stock Exchange
Delivered a 34-m radio telescope to Radio Research Laboratory
- 1990 Technical & Engineering Center opened in Makuhari Techno Garden, Nakase, Mihama-ku, Chiba
- 1993 Delivered a digital library system to Nara Institute of Science and Technology
- 1995 Fukuoka Sales Office opened (presently Kyushu Sales Office)
- 1997 Delivered a digital broadcasting system to NHK International Broadcasting Station
Successfully developed a riding simulator for motor-bicycles jointly with Honda Motor Co., Ltd.,
- 2001 Delivered a satellite-based digital image transmission system to a CATV station
Delivered a satellite-based data distribution system to a convenience store chain
- 2002 Delivered a genome analysis computer system to Kazusa DNA Research Institute
Enterprise-wide Environmental Management System certified (ISO 14001)
- 2005 Delivered a high-performance computing server to Kyushu University
- 2007 Delivered J-Alert receivers to 696 local governments
- 2008 Information Security Management System certified (ISO 27001)
- 2010 Quality Management System certified (ISO 9001)
- 2011 Delivered an automatic voice recognition system to the National Research Institute of Police Science
- 2012 Conducted "field demonstration tests of multi-transmission methods for disaster prevention information" in Koto Ward in Tokyo in cooperation with the Fire and Disaster Management Agency (FDMA).
- 2013 The North America liaison office established in Bend, Oregon, USA (Closed in March 2023)
Designed and delivered a disaster prevention information management system to the City of Tomigusuku, Okinawa
- 2014 Delivered a large order of satellite communications antenna systems to a broadcasting satellite company
- 2015 Okinawa Office opened
Delivered a membership management system for smartphones to a major distributor
- 2016 Designed and delivered a disaster prevention information management system to the City of Urasoe, Okinawa
Delivered a university-wide Wi-Fi system and cloud-based groupware for educational institutions to Mukogawa Women's University
Started to develop and provide a hands-on VR drill solution
- 2017 "Field demonstration tests utilizing tethered drones aimed at gathering information under disaster conditions program selected to be a part of the FDMA's" Scientific Fire and Disaster Prevention Technology Promotion Program
Acquired shares of AeroPartners Incorporated (subsidiary acquisition)
Acquired shares of NetWell System Corporation (subsidiary acquisition)
- 2020 Entered into a business alliance with Ascentek K.K. to build a foundation for promoting remote work
- 2021 Head office moved to Shinjuku Mitsui Building No. 2 in Nishi-Shinjuku, Shinjuku-ku, Tokyo
Nihonbashi Sales Office opened
Underwrote a third-party allotment of shares of VFR Inc.
- 2022 Signed a strategic business alliance agreement with OEC Co. Ltd.
Moved from the Second Section of the Tokyo Stock Exchange to the Standard Market
- 2023 Chitose-Eniwa Sales Office opened
Underwrote a third-party allotment of shares of AnchorZ Inc.
Became a "GX Certified Company" under a Ministry of Economy, Trade and Industry program
Participated in the "DX League" led by the Ministry of Economy, Trade and Industry
- 2024 Won the Excellence Award in the the Disaster Prevention and Mitigation and the SDGs category of the 2024 Disaster Prevention and Mitigation and Sustainability Awards

Principal Business Partners

SYSTEM SOLUTIONS

Amazon Web Services, Inc.	Meta Platforms, Inc.
ax Inc.	Mindhive Ltd.
BeyondTrust Corporation	Nippon RAD Inc.
CYME International T&D Inc.	NuraLogix Corporation
EXGEN NETWORKS Co., Ltd	Oracle Corporation Japan
GLORY LTD.	Photosynth Inc.
Hewlett Packard Japan, G.K.	PTC Japan K.K.
HP Japan Inc.	Takazono Corporation
IBM Japan, Ltd.	VARIANTSOFT INC.
J's Communication Co., Ltd.	Virtual Mechanics Corporation
Kiteworks USA, LLC	WASAY SOFTWARE TECHNOLOGY INC.
Manitoba Hydro International Ltd.	XLsoft K.K.

NETWORK SOLUTIONS

Advantech Wireless Technologies Inc.	KenCast, Inc.
Alcatel-Lucent Enterprise	KRATOS Defense & Security Solutions Inc.
Amagi Media Labs PTE Ltd.	MediaKind
Amino Communications Ltd.	Necfru Inc.
Apposite Technologies	Novelsat Ltd.
ATEME SA	Nomadix, Inc.
Baicells Japan Co., Ltd.	Norsat International Inc.
Communications & Power Industries (CPI)	Novra Technologies Inc.
Comtech Satellite Network Technologies Corp. (UHP)	NxVi Microelectronics Technology (Jinan) Co., Ltd.
Comtech Satellite Network Technologies Inc. (EFData, Xicom)	PacketLight Networks Ltd.
Comtech Space Components and Antennas	Peak Communications Ltd.
Cross Technologies, Inc.	RADWIN Ltd.
EiTV USA, INC	Siklu Communication Ltd.
Elber S.r.l.	silex technology, Inc.
ENENSYS Technologies, S.A.	ST Engineering iDirect, Inc.
ETL Systems Ltd.	Synamedia Vividtec Holdings, Inc.
EVC Inc.	Teledyne UK Limited.
Fortra, LLC (FileCatalyst)	TestTree
Gilat Satellite Networks Ltd.	Ubiik, Inc.
Global Invacom Group (Skyware, Foxcom)	ViaLite Communications
Haivision Systems Inc.	Viking Satcom
HPE Aruba networking	XMW Inc.
IBEX Technology Co.,Ltd.	

ELECTRONIC COMPONENTS & INSTRUMENTS

AOS Thermal Compounds LLC	Mid-Atlantic RF Systems, Inc.
Bevenic Group Oy	Mini-Systems, Inc.
Daido Steel Co., Ltd.	MTI-MILLIREN TECHNOLOGIES, INC.
DMC Co., Ltd.	MUROMACHI CHEMICALS INC.
Emerging Display Technologies Corp.	National Instruments Japan Corporation
Ensign Power Systems, Inc.	Photonic Science Technology Inc.
Epoxy Technology, Inc.	PULS GmbH
Knowles Electronics, LLC.	Quake Global Inc.
Marktech Optoelectronics Corporation	QUEST Microwave Inc.
Micro-Star INT'L CO., LTD. (IPC)	RECOM Asia Pte. Ltd.
Micro-Tronics	SPACEK LABS, INC.
Microwave Dynamics, Inc.	Wainwright Instruments GmbH



Headquarters / Shinjuku Mitsui Building No. 2, 3-2-11 Nishi-Shinjuku, Shinjuku-ku, Tokyo 160-0023

<https://www.rikei.co.jp/>



We are certified to ISO 14001, the international standard for environmental management systems. Company names and product names mentioned herein may be the trademarks or registered trademarks of their respective companies.

Printed in Japan July, 2024